



A development in our provision

A development in our provision

- The current situation
- The plan
- What does it mean for our pupils?
- What does it mean for our families?
- Questions

We are facing a number of significant challenges:

- A rapidly growing number of children with special needs needing school places
- Pupils having to travel significant distances to access appropriate education
- A school building that is increasingly unfit for purpose
- No specialist VI provision for pupils at SHS after the age of 14
- Severe cuts in school budgets

Eden Academy new school bids

The Eden Academy submitted bids for 2 new free schools to provide more SEN provision in Hillingdon.



A new primary school in the south of the borough for pupils with severe and profound learning difficulties

Secondary provision in the north of the borough for pupils with severe learning difficulties including VI support

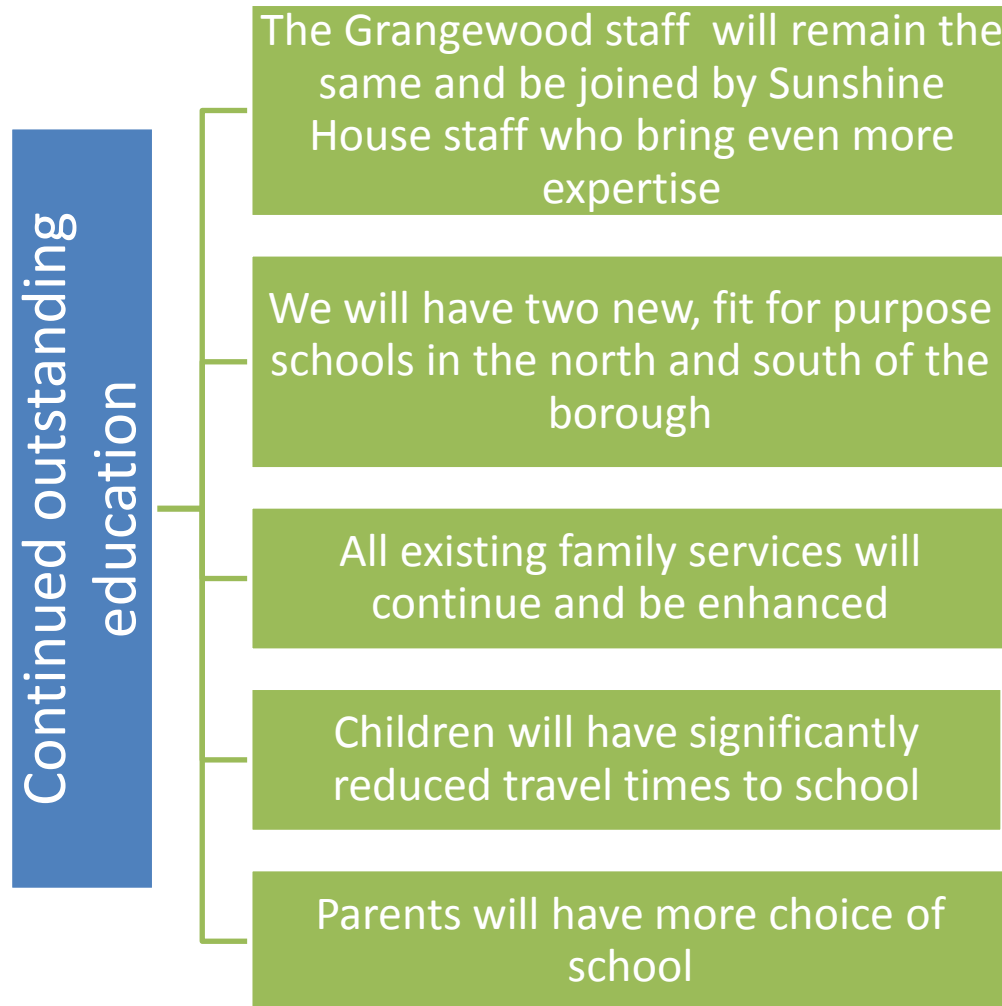


The good news is that both of the Academy's bids have been successful!

So we can now offer:

- all-through provision (education and therapy)
- for all Eden pupils
- wherever they live in the borough

Benefits for our Grangewood families



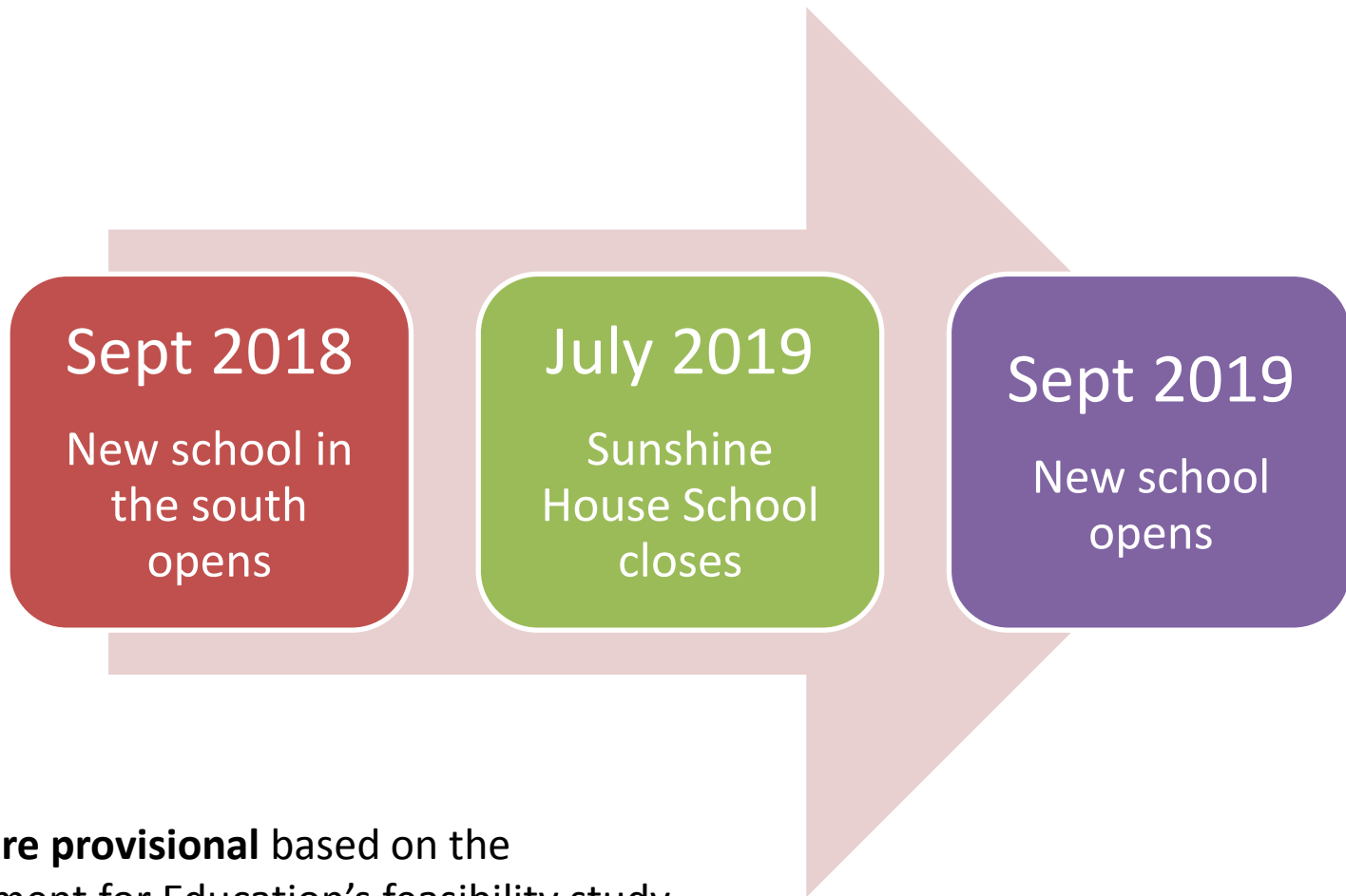
Any disadvantages?

In order to build a new school on the Grangewood site, it is likely that we will need to find temporary accommodation for Grangewood children for an extended period (probably about a year).

We are exploring a number of different options including:

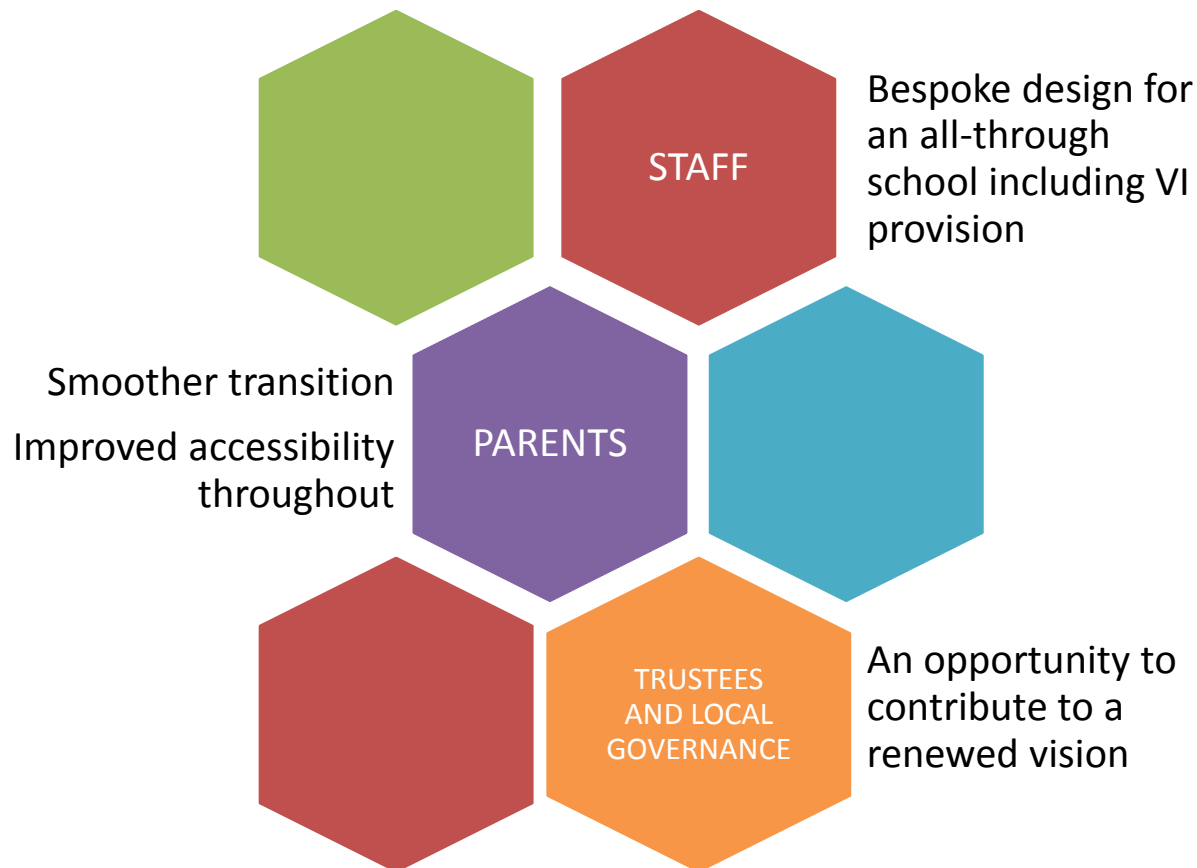
- finding space in an existing school in the borough
- moving to the site of the new primary school in the south of the borough (if it is completed in time)

Earliest possible timings



Dates are provisional based on the Department for Education's feasibility study

An exciting chance to be part of an absolutely innovative new school



- 90 primary places
- 90 secondary places

- 80 primary places
- 80 secondary places



north of the borough

south of the borough



Questions?
